

TO LET: Suite G/3, Ground Floor 441 sqm (4,746 sq ft)



CGI Generated Floor finishes

Description

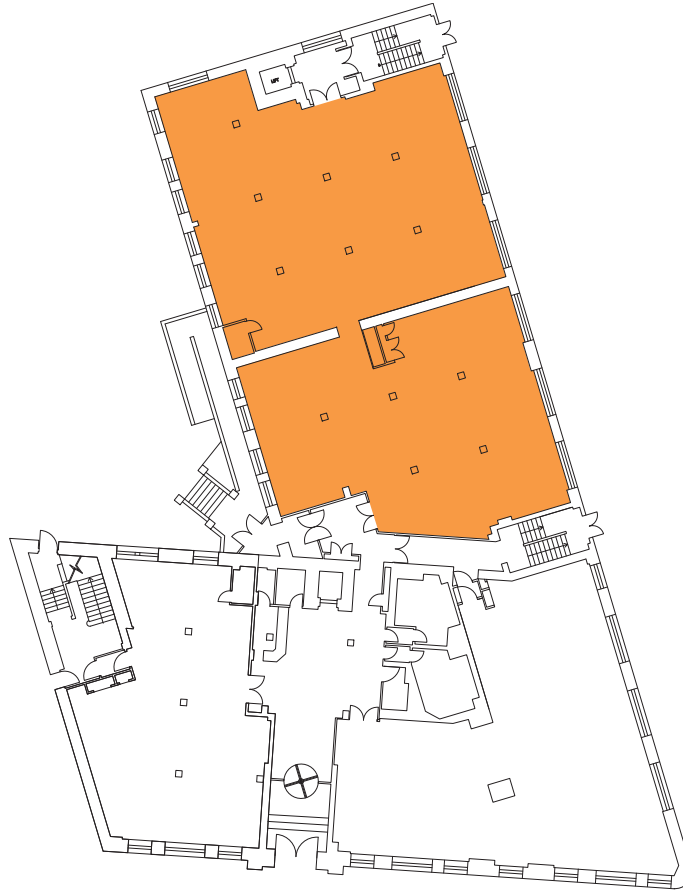
Great Michael House and Links House comprise two adjoining period buildings which have been extensively refurbished to provide high quality contemporary open plan offices. Constructed over 5 storeys, the buildings command a superb location overlooking Leith Links.

This suite is located on the ground floor of Links House and provides large, open plan accommodation with natural light on 2 sides.





Ground Floor - Suite G/3



Outline specification

- Flexible, open plan suite
- Raised access floor throughout office accommodation
- Suspended ceiling with recently upgraded LED lighting
- Manned concierge and CCTV coverage
- 2x passenger lifts to all floors
- New LED lighting with PIR sensors throughout the common parts
- EPC Rating – B

Amenity specification

- On-site café
- Free to use communal meeting/collaboration space *
- Instant data connection via our superfast fibre optic broadband - no wayleaves required
- On-site car parking
- 4 electric car charging points
- Secure surface and underground bike storage
- Shower facilities

* Conditions apply

Letting terms

Full details of rent and letting terms are available upon application to the joint letting agents.

Viewing and further information

For further information and to arrange a viewing, please contact the joint letting agents.



Mike Irvine
Kate Jack

Savills
Wemyss House, 8 Wemyss Place
Edinburgh EH3 6DH

mike.irvine@savills.com
kate.jack@savills.com



Lucy Yates
David Stevenson

Galbraith
59 George St
Edinburgh EH2 2JG

lucy.yates@galbraithgroup.com
david.stevenson@galbraithgroup.com