

TO LET: Suite G/1, Ground Floor 158 sq m (1,696 sq ft)



Description

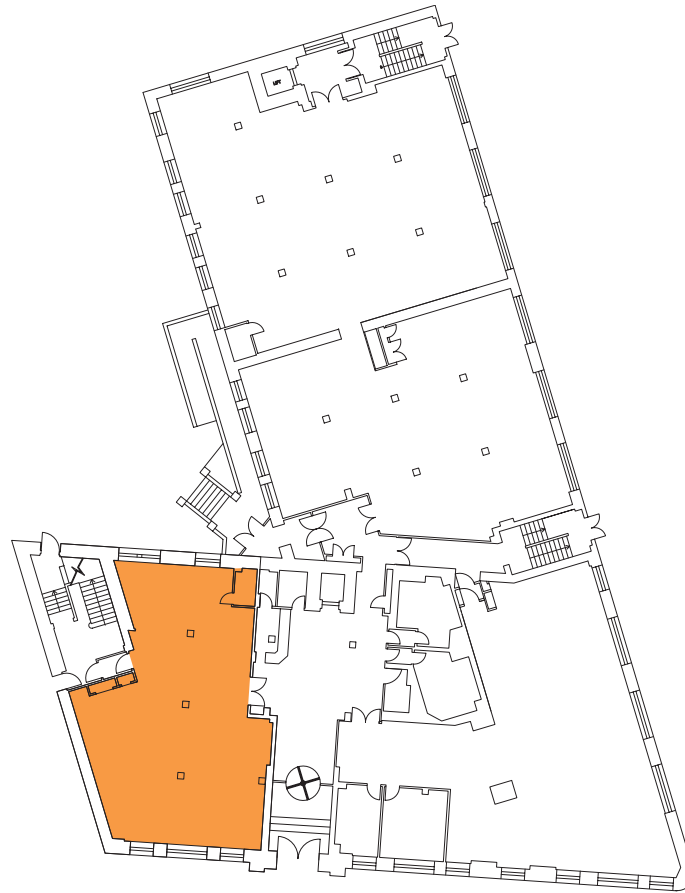
Great Michael House and Links House comprise two adjoining period buildings which have been extensively refurbished to provide high quality contemporary open plan offices. Constructed over 5 storeys, the buildings command a superb location overlooking Leith Links.

This suite is located on the ground floor of Links House and provides large, open plan accommodation with natural light on 2 sides.





Ground Floor - Suite G/1



Outline specification

- Flexible, open plan suite
- Raised access floor throughout office accommodation
- Suspended ceiling with recently upgraded LED lighting
- Manned concierge and CCTV coverage
- 2x passenger lifts to all floors
- New LED lighting with PIR sensors throughout the common parts
- EPC Rating – TBC

Amenity specification

- On-site café
- Free to use communal meeting/collaboration space *
- Instant data connection via our superfast fibre optic broadband - no wayleaves required
- On-site car parking
- 4 electric car charging points
- Secure surface and underground bike storage
- Shower facilities

* Conditions apply

Letting terms

Full details of rent and letting terms are available upon application to the joint letting agents.

Viewing and further information

For further information and to arrange a viewing, please contact the joint letting agents.



Mike Irvine
Kate Jack

Savills
Wemyss House, 8 Wemyss Place
Edinburgh EH3 6DH

mike.irvine@savills.com
kate.jack@savills.com



Lucy Yates
David Stevenson

Galbraith
59 George St
Edinburgh EH2 2JG

lucy.yates@galbraithgroup.com
david.stevenson@galbraithgroup.com