

TO LET: Suite 3/3, Third Floor **189.3 sq m (2,038 sq ft)**

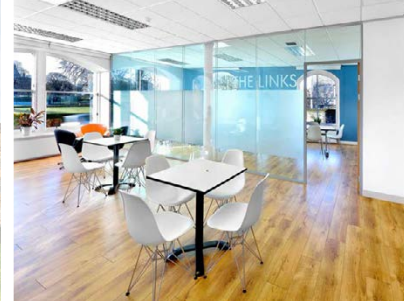
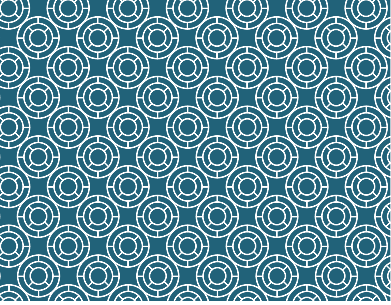


Description

Great Michael House and Links House comprise two adjoining period buildings which have been extensively refurbished to provide high quality contemporary open plan offices. Constructed over 5 storeys, the buildings command a superb location overlooking Leith Links.

This suite is located on the third floor of Great Michael House offering bright, open plan accommodation.





Third Floor - Suite 3/3



Outline specification

- Flexible, open plan suite
- Raised access floor throughout office accommodation
- Suspended ceiling with recently upgraded LED lighting
- Manned concierge and CCTV coverage
- 2x passenger lifts to all floors
- New LED lighting with PIR sensors throughout the common parts
- EPC Rating – C

Amenity specification

- Onsite café
- Free to use communal meeting/collaboration space *
- Instant data connection via our superfast fibre optic broadband - no wayleaves required
- On-site car parking
- 4 electric car charging points
- Secure surface and underground bike storage
- Shower facilities

* Conditions apply

Letting terms

Full details of rent and letting terms are available upon application to the joint letting agents.

Viewing and further information

For further information and to arrange a viewing, please contact the joint letting agents.



Mike Irvine
Henrietta Wilson

Savills
Wemyss House, 8 Wemyss Place
Edinburgh EH3 6DH

mike.irvine@savills.com
henrietta.wilson@savills.com



Ben Dobson
Lucy Yates

Galbraith
59 George St
Edinburgh EH2 2JG

Ben.dobson@galbraithgroup.com
Lucy.yates@galbraithgroup.com