

TO LET: Suite 3/4, Third Floor **195.1 sq m (2,100 sq ft)**

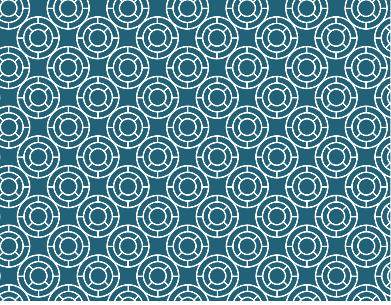


Description

Great Michael House and Links House comprise two adjoining period buildings which have been extensively refurbished to provide high quality contemporary open plan offices. Constructed over 5 storeys, the buildings command a superb location overlooking Leith Links.

This suite is located on the third floor of Great Michael House and provides bright, open plan accommodation to the front of the building with views across Leith Links.





Third Floor - Suite 3/4



Specification

- Impressive full height atrium in Great Michael House
- Fully refurbished contemporary common areas
- Individual open plan suites
- Secure dedicated reception area
- Fully accessed raised floor
- Suspended ceilings with VDU compliant lighting
- 2 passenger lifts to all floors
- Tea preparation area on each floor
- Upgraded toilet facilities on each floor
- DDA compliant facilities
- On site parking/unlimited on street parking
- Shower facilities and bicycle racks available
- A new Galway Gourmet Café and communal meeting room is situated in Great Michael House
- Great Michael House EPC rating 'C'

Letting terms

Full details of rent and letting terms are available upon application to the joint letting agents.

Viewing and further information

For further information and to arrange a viewing, please Contact the joint letting agents.



Mike Irvine
Henrietta Wilson

Savills
Wemyss House, 8 Wemyss Place
Edinburgh EH3 6DH

mike.irvine@savills.com
henrietta.wilson@savills.com



Ben Dobson
Lucy Yates

CKD Galbraith
59 George St
Edinburgh EH2 2JG

Ben.dobson@galbraithgroup.com
Lucy.yates@galbraithgroup.com

Sat Nav coordinates - Lat 55:58:21N Lon 3:09:48W

www.links-place.co.uk

