

TO LET: Suite G/2, Ground Floor 230.8 sq m (2,484 sq ft)

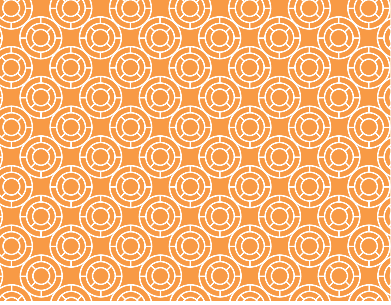


Description

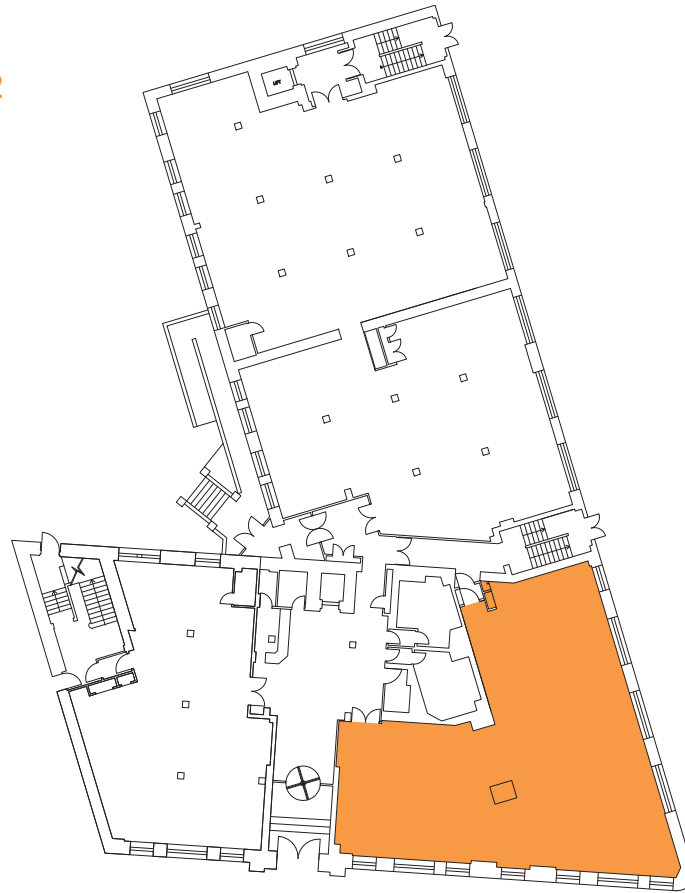
Great Michael House and Links House comprise two adjoining period buildings which have been extensively refurbished to provide high quality contemporary open plan offices. Constructed over 5 storeys, the buildings command a superb location overlooking Leith Links.

This suite is located on the Ground Floor of Links House and provides large, open plan accommodation with natural light on 2 sides.





Ground Floor - Suite G/2



Specification

- Impressive full height atrium in Great Michael House
- Fully refurbished contemporary common areas
- Individual open plan suites
- Secure dedicated reception area
- Fully accessed raised floor
- Suspended ceilings with VDU compliant lighting
- 2 passenger lifts to all floors
- Tea preparation area on each floor
- Upgraded toilet facilities on each floor
- DDA compliant facilities
- On site parking/unlimited on street parking
- Shower facilities and bicycle racks available
- A new Galway Gourmet Café and communal meeting room is situated in Great Michael House
- Great Michael House EPC rating 'C'

Viewing and further information

For further information and to arrange a viewing, please Contact the joint letting agents.



Straun Whyte

Montagu Evans
Exchange Tower
19 Canning St
Edinburgh EH3 8EG

struan.whyte@montagu-evans.co.uk



Harry Trotter
Jamie Addison-Scott

CKD Galbraith
59 George St
Edinburgh EH2 2JG

harry.trotter@galbraithgroup.com
Jamie.Addison-Scott@galbraithgroup.com

Letting terms

Full details of rent and letting terms are available upon application to the joint letting agents.

Sat Nav coordinates - Lat 55:58:21N Lon 3:09:48W

www.links-place.co.uk

